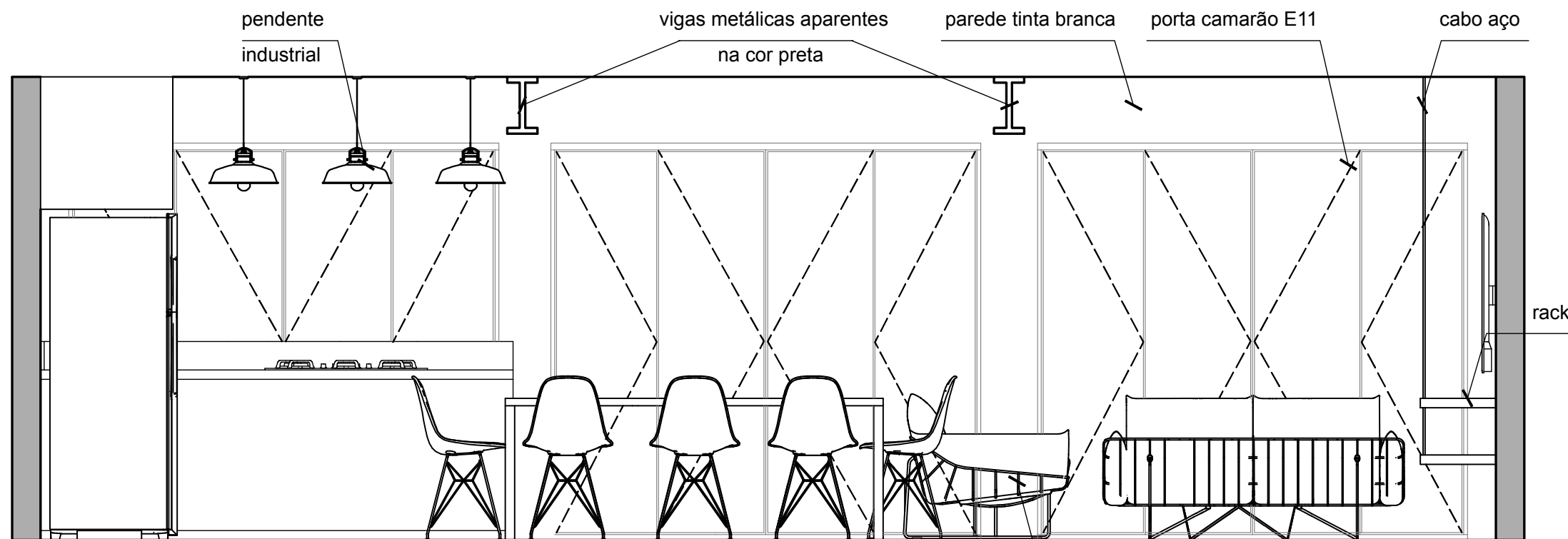


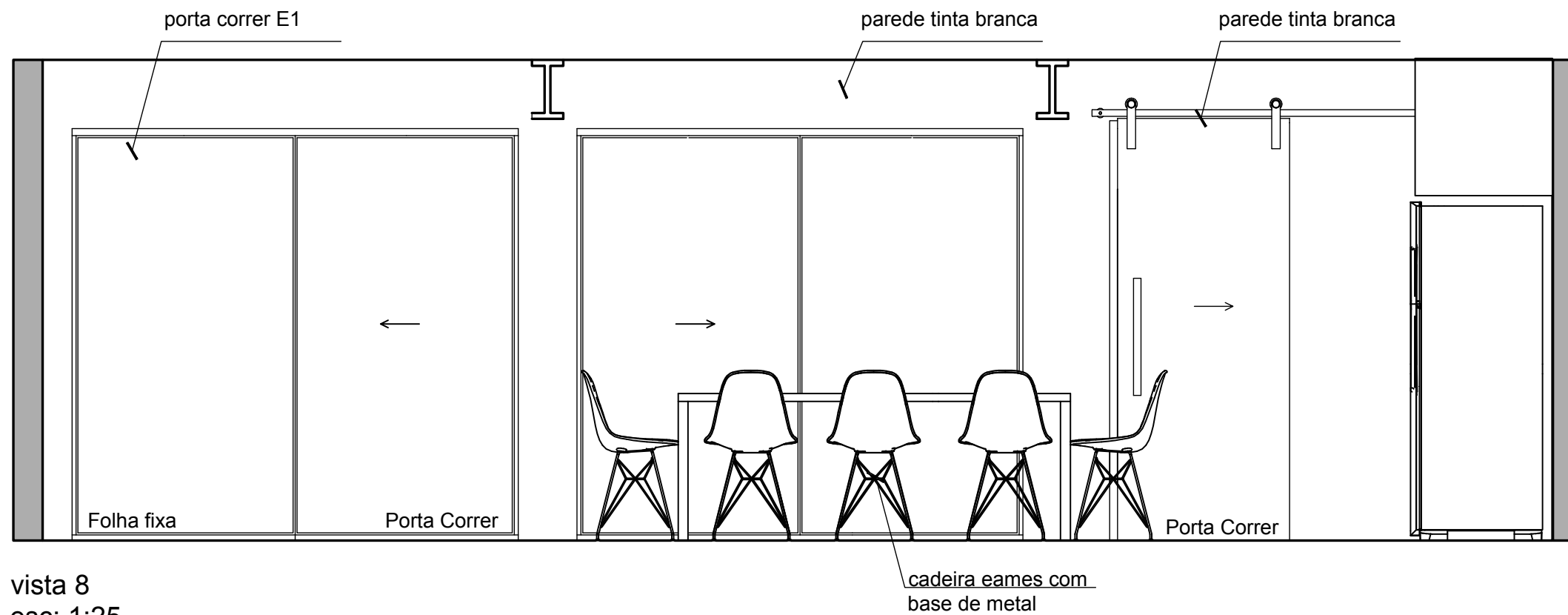
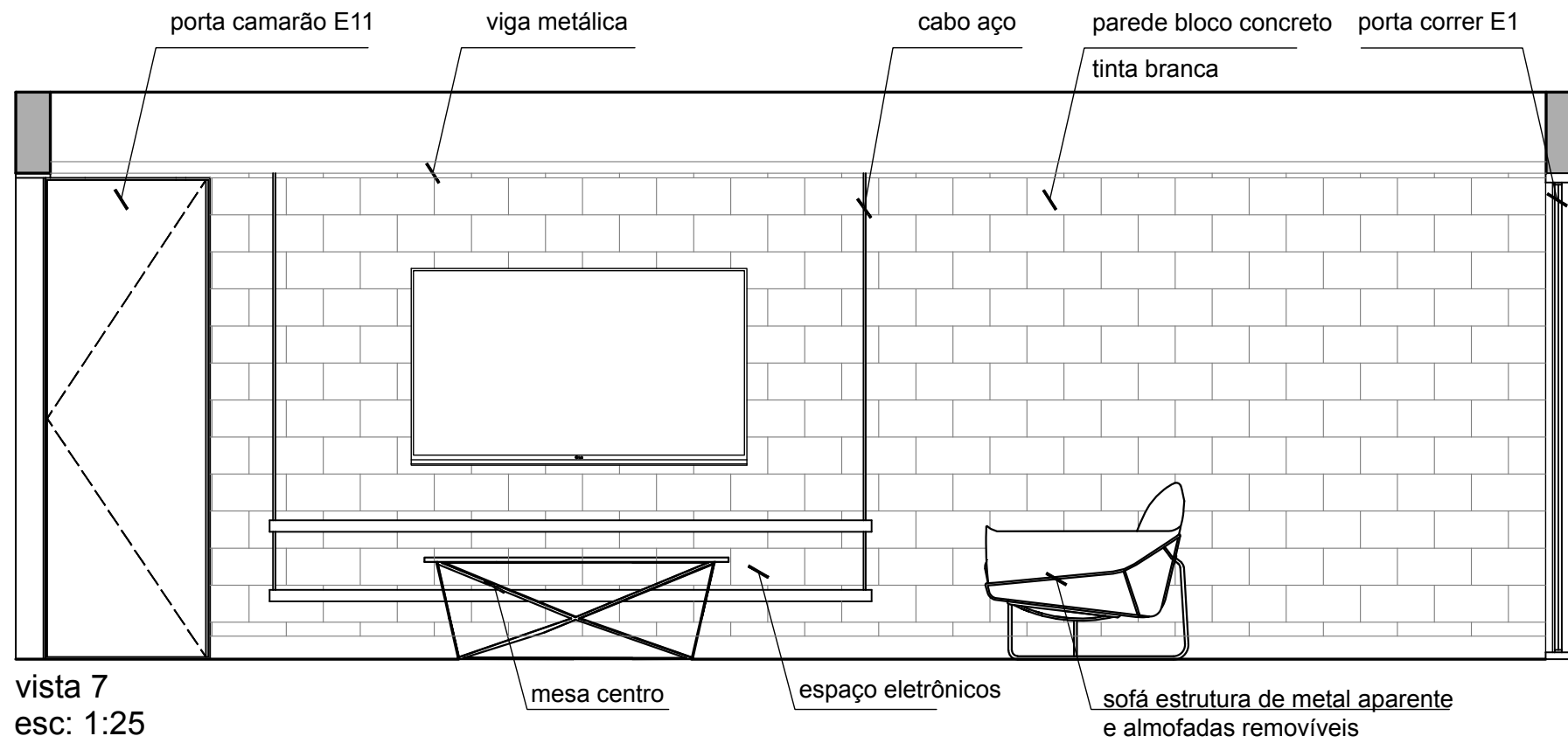
vista 5  
esc: 1:25

banqueta eames com base de metal e assento impermeável



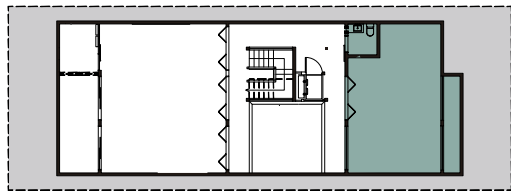
vista 6  
esc: 1:25

sofá estrutura de metal aparente e almofadas removíveis

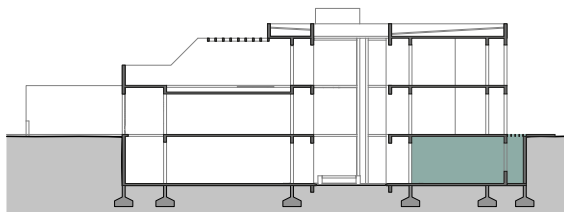




# Detalhamento | canto quieto



PLANTA BAIXA SUBSOLO



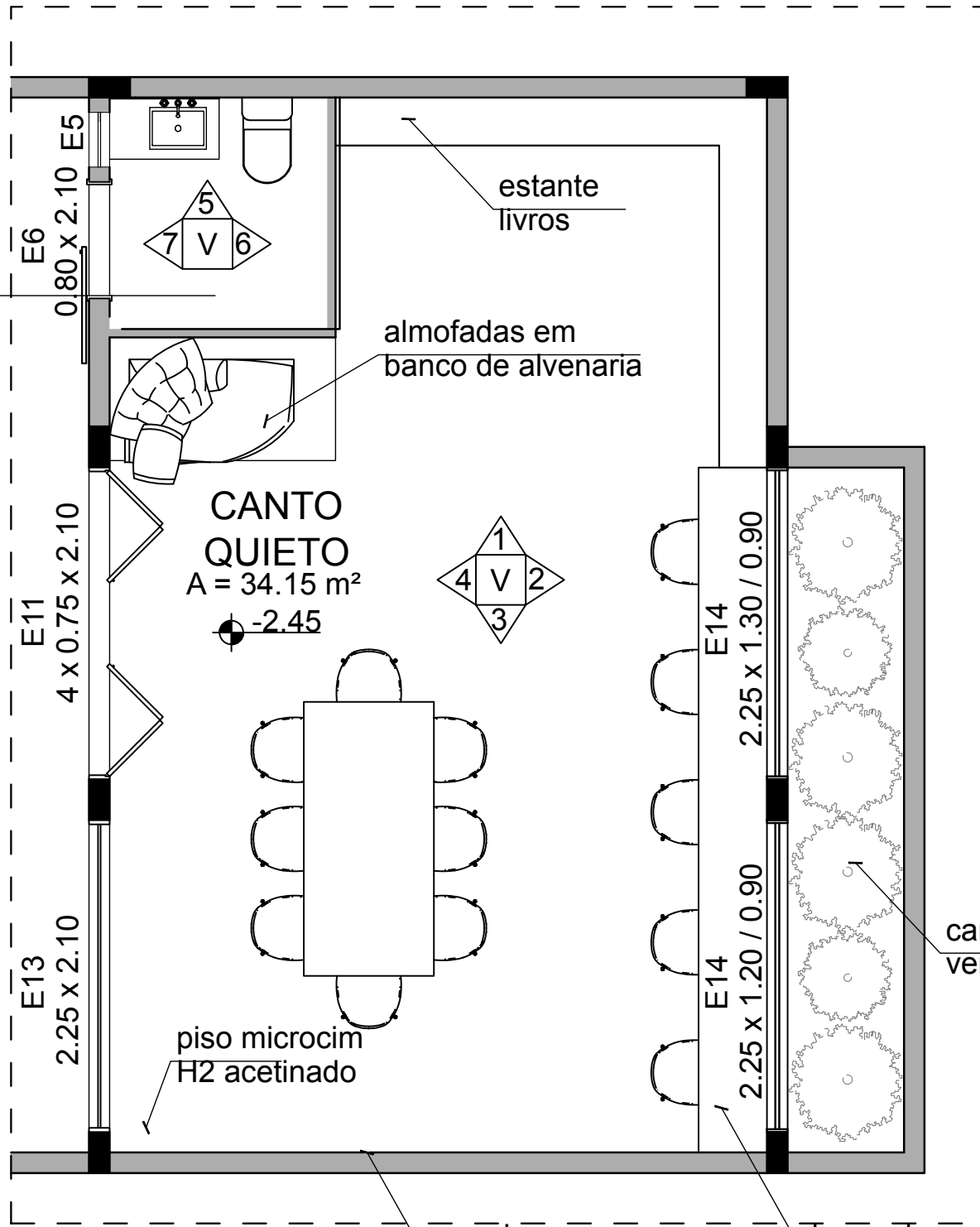
CORTE



**BANHO**

A = 2.40 m<sup>2</sup>

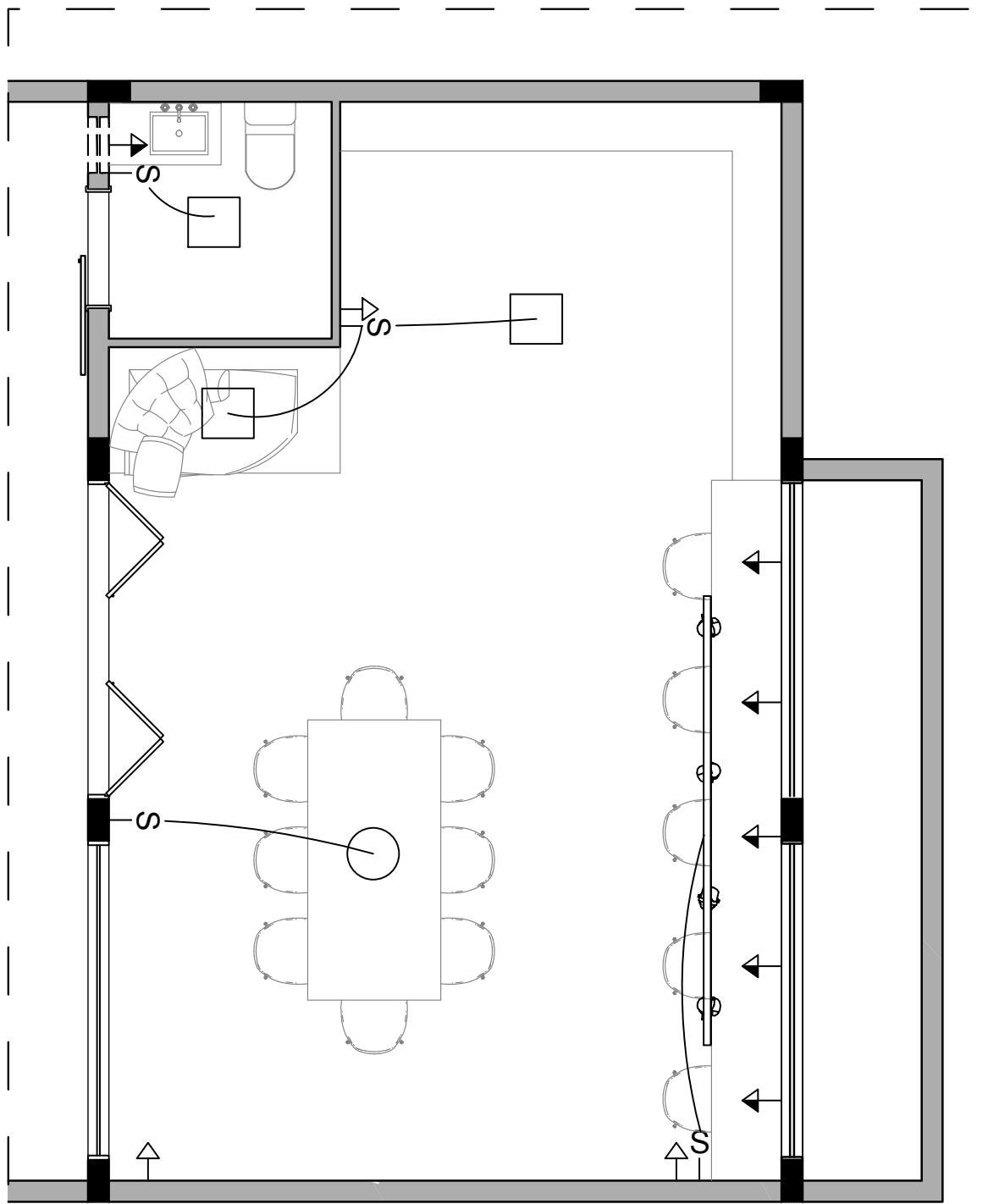
-2.47



PLANTA DE LAYOUT  
esc: 1:40

parede  
lousa

bancada  
estação individual



PLANTA PONTOS ELÉTRICOS  
esc: 1:40

LEGENDA



PLAFON



TOMADA BAIXA



INTERRUPTOR SIMPLES



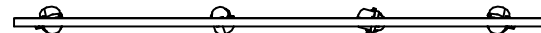
PENDENTE



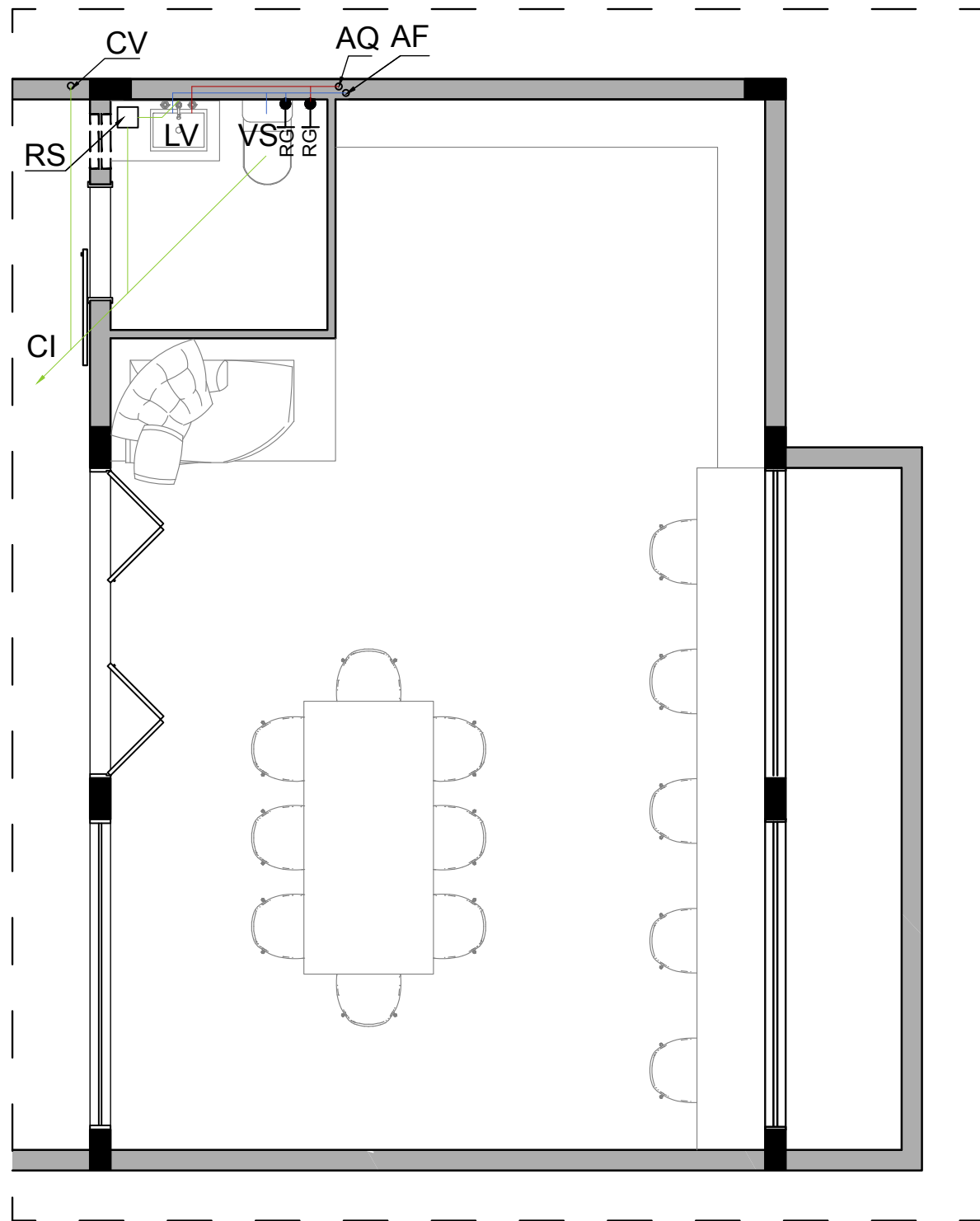
TOMADA MÉDIA



INTERRUPTOR 3W



TRILHO



PLANTA HIDRÁULICA  
esc: 1:40

### LEGENDA

AF - PRUMADA ÁGUA FRIA

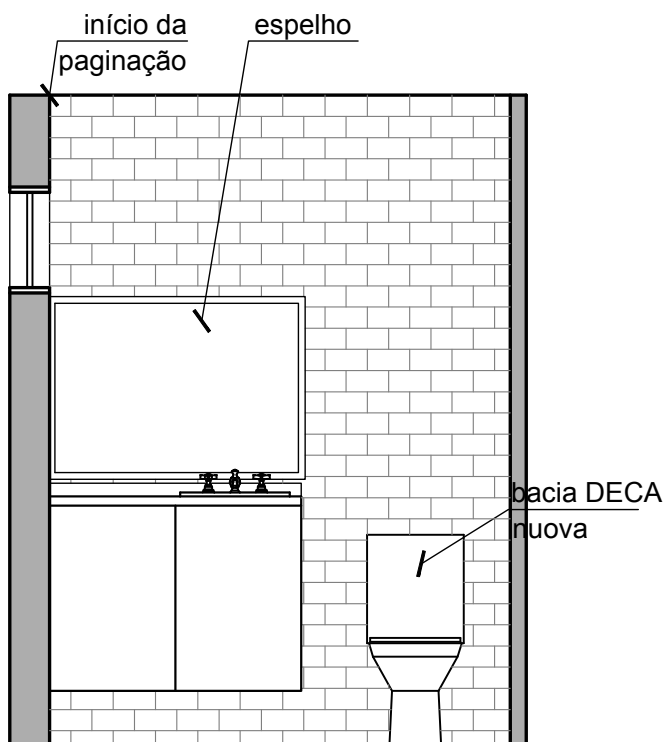
CH - CHUVEIRO

AQ - PRUMADA ÁGUA QUENTE

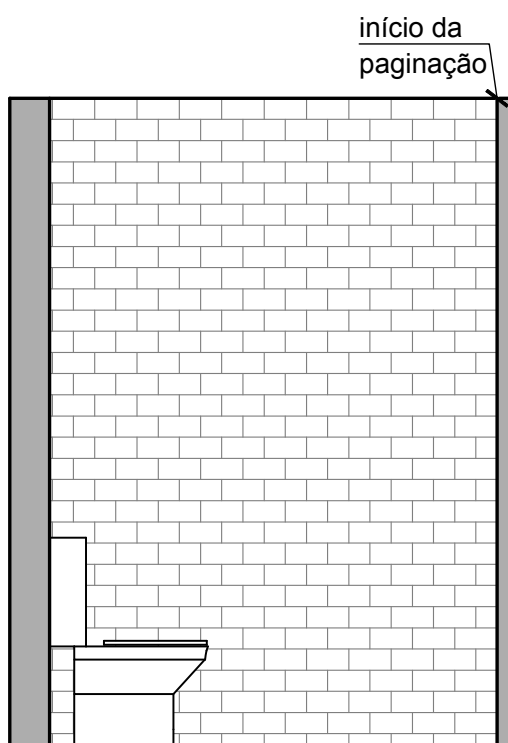
RS - RALO SIFONADO

CV - COLUNA DE VENTILAÇÃO

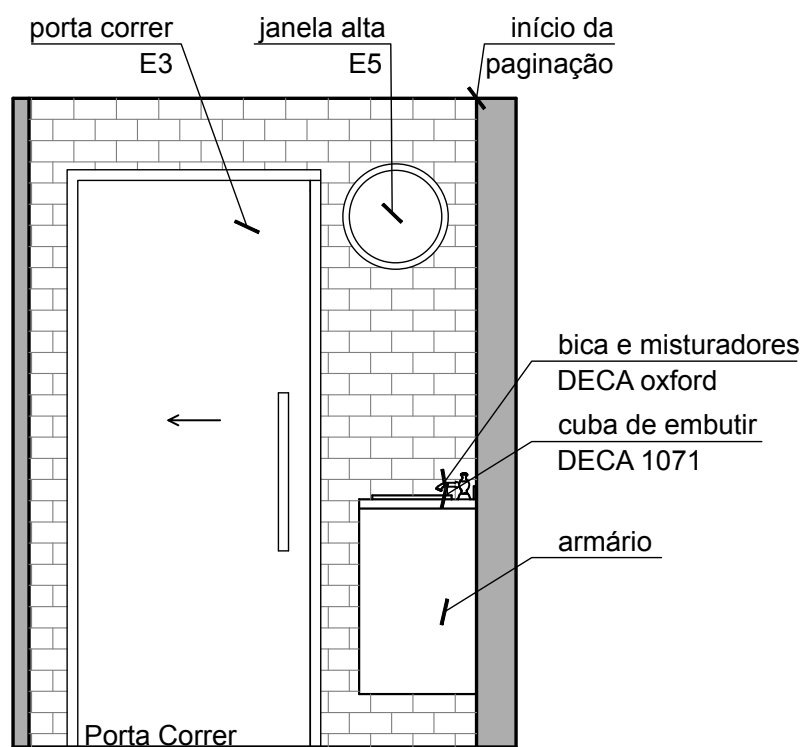
CI - CAIXA DE INSPECÇÃO



vista 5  
esc: 1:25

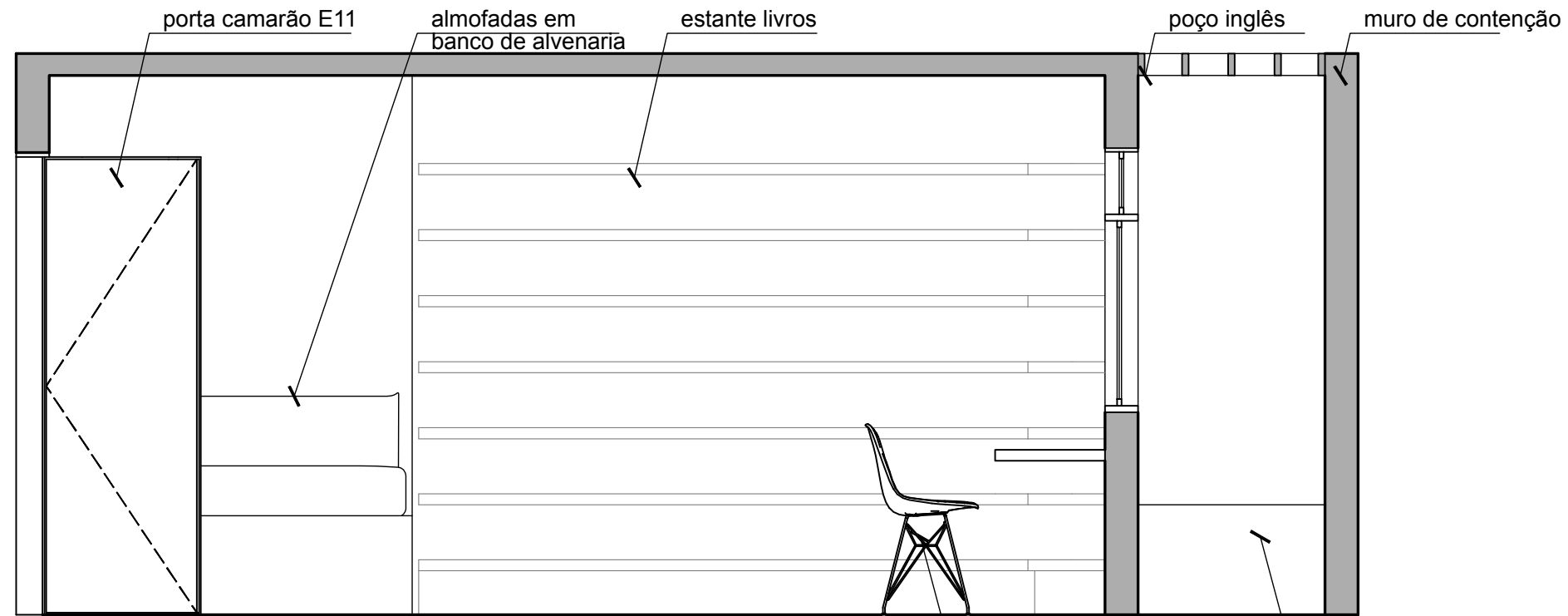


vista 6  
esc: 1:25



vista 7  
esc: 1:25

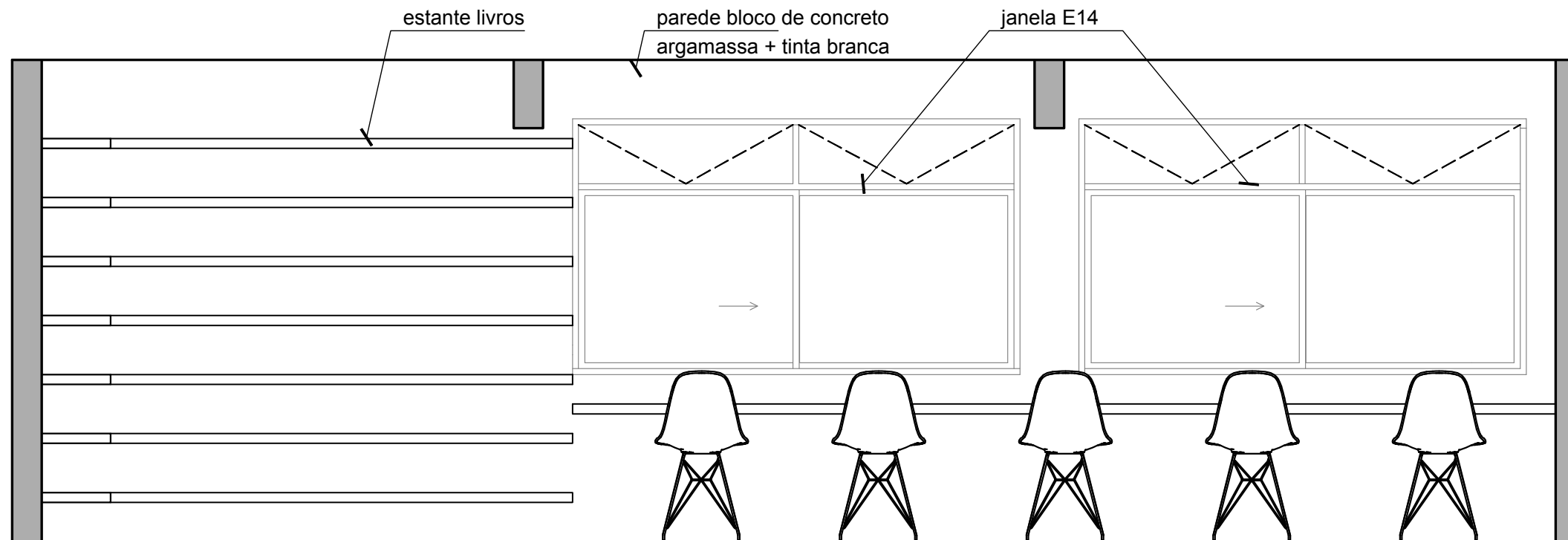




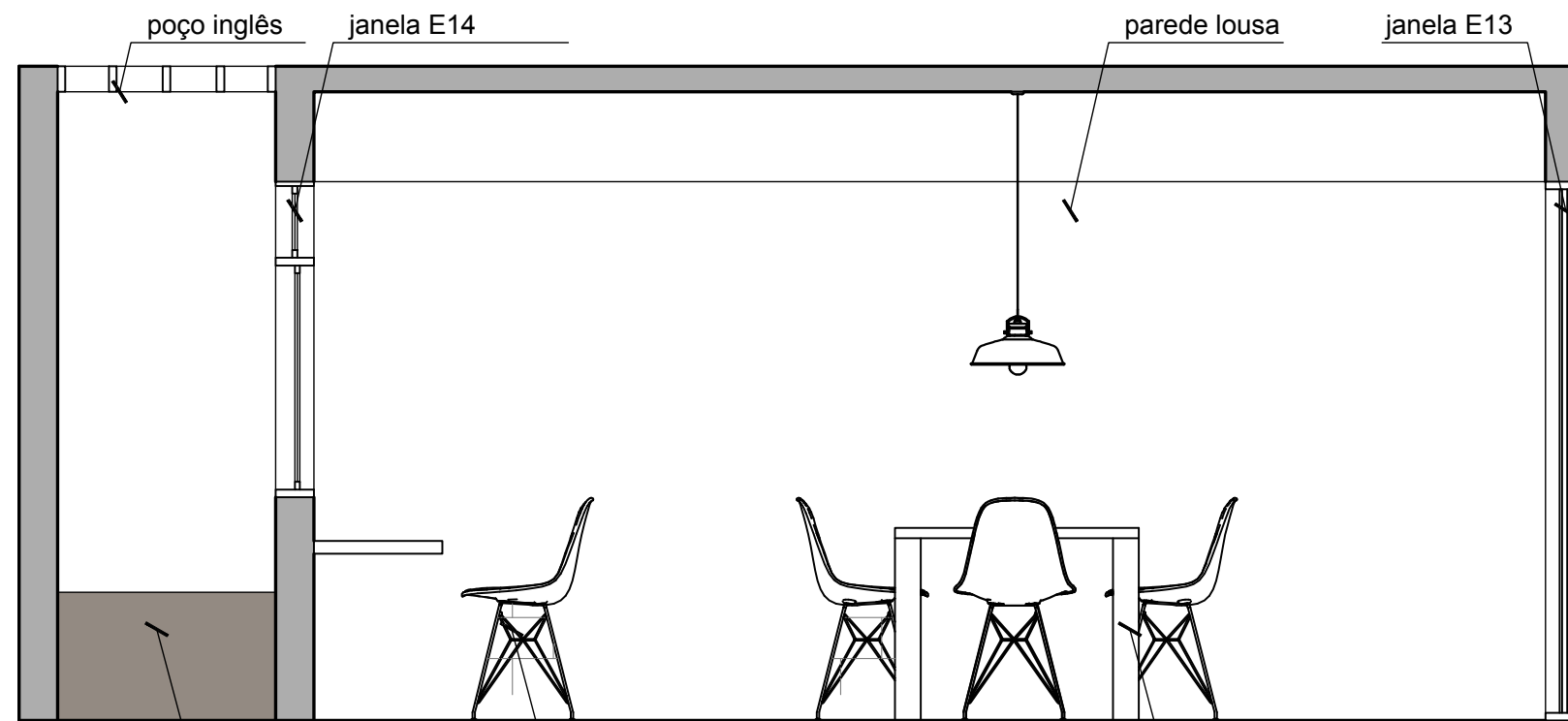
vista 1  
esc: 1:25

cadeira eames com  
base de metal

canteiro



vista 2  
esc: 1:25

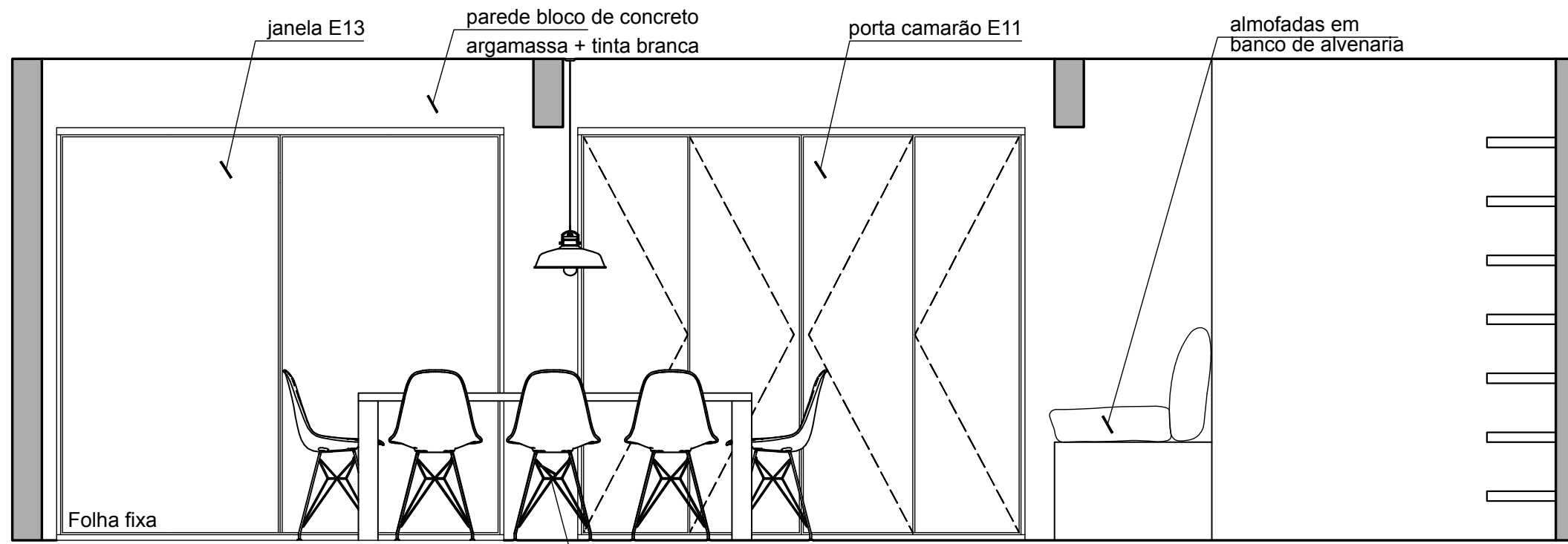


vista 3  
esc: 1:25

canteiro

cadeira eames com  
base de metal

mesa 8 lugares



vista 4  
esc: 1:25

Folha fixa

mesa 8 lugares

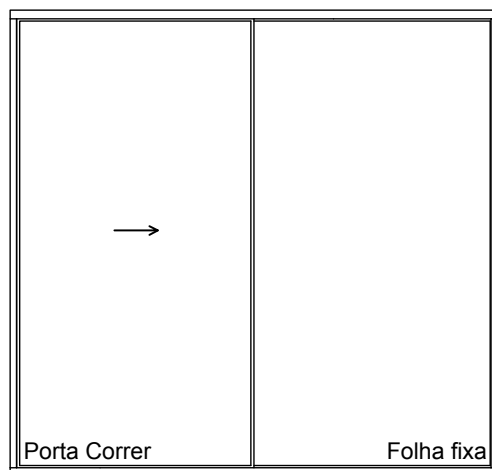
parede bloco de concreto  
argamassa + tinta branca

porta camarão E11

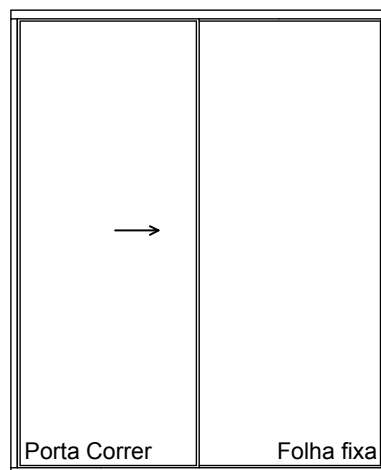
almofadas em  
banco de alvenaria



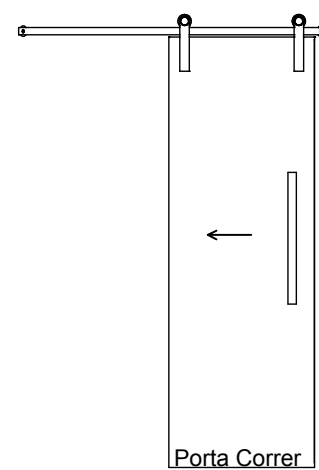
# Detalhamento | esquadrias



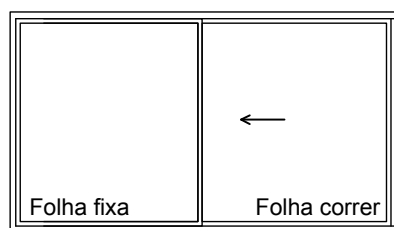
E1  
2 x 1.10 x 2.10



E2  
2 x 0.85 x 2.10



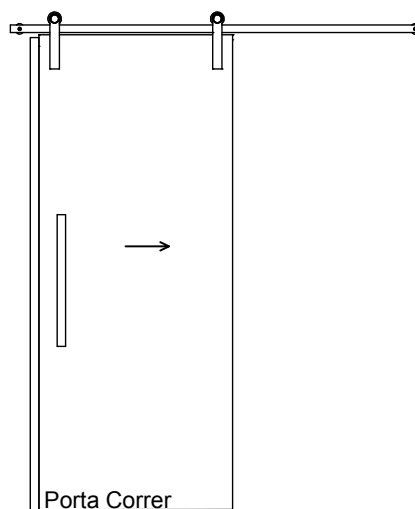
E3  
0.65 x 2.10



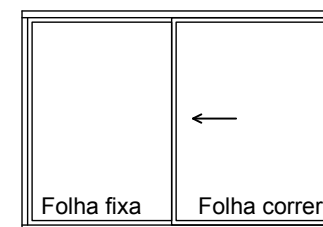
E4  
1.75 x 1.00 /  
1.10



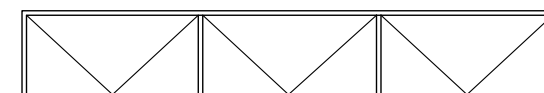
E5  
0.40 x 0.40 /  
1.70



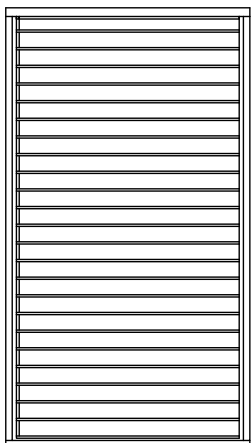
E6  
0.85 x 2.10



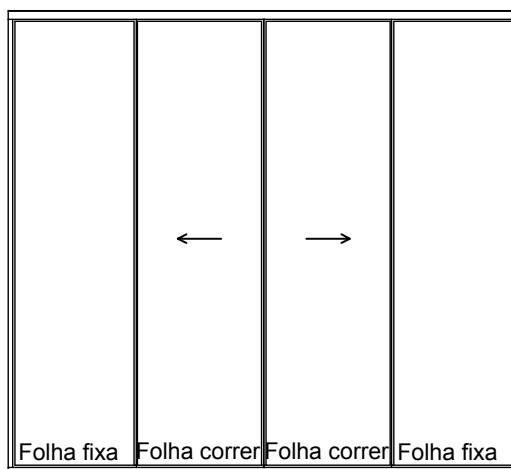
E7  
1.50 x 1.00 /  
1.10



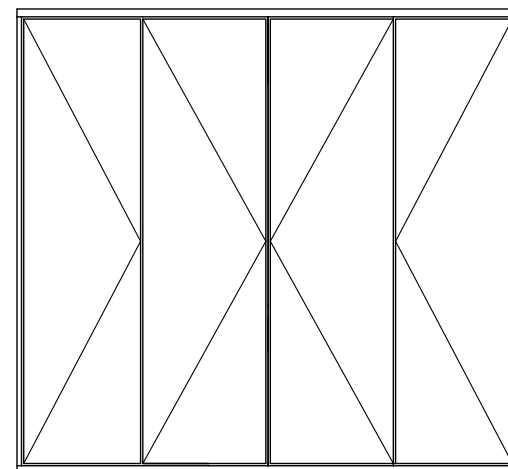
E8  
3 x 0.80 x 0.30  
/ 1.80



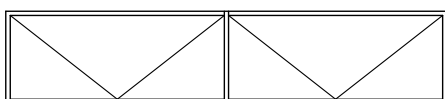
E9  
0.65 x 2.10



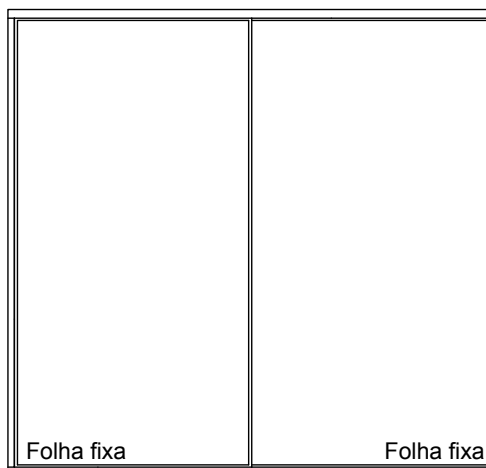
E10  
4 x 0.75 x 2.10



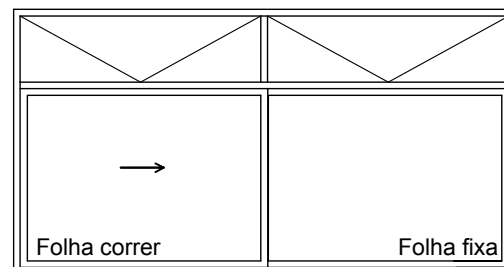
E11  
4 x 0.75 x 2.10



E12  
2 x 1 x 0.40 /  
1.70

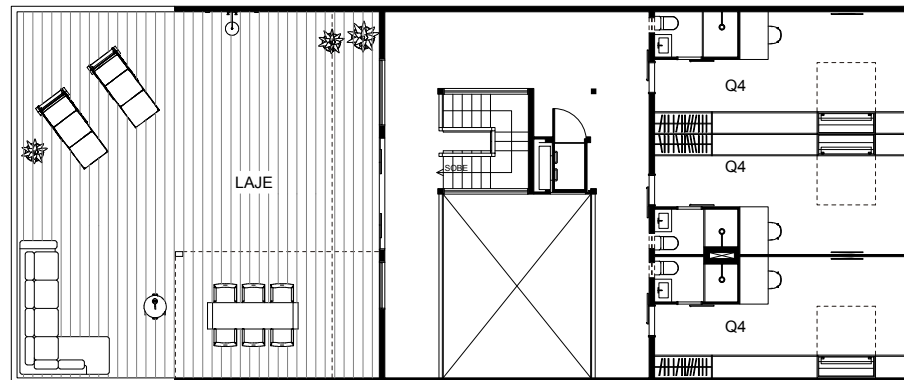


E13  
2 x 1.10 x 2.10

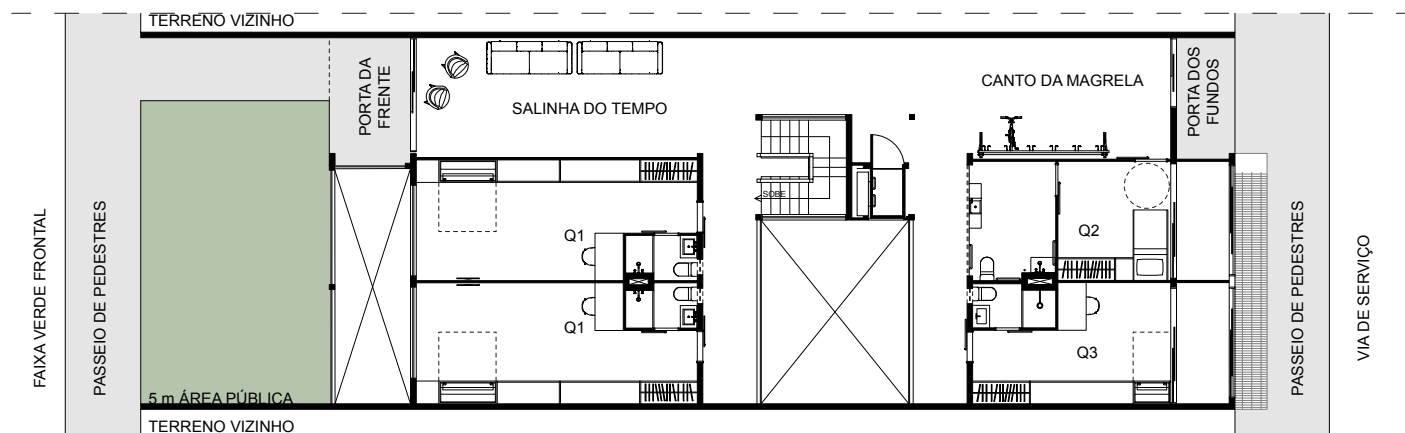


E14  
2.25 x 1.20 /  
0.90

Aloja 714  
Planta Baixa  
10x24m



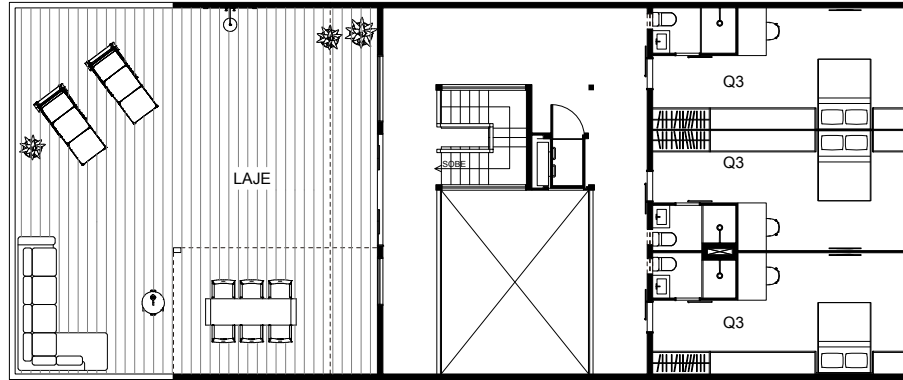
PLANTA 1º PAV. DIA  
esc: 1:150



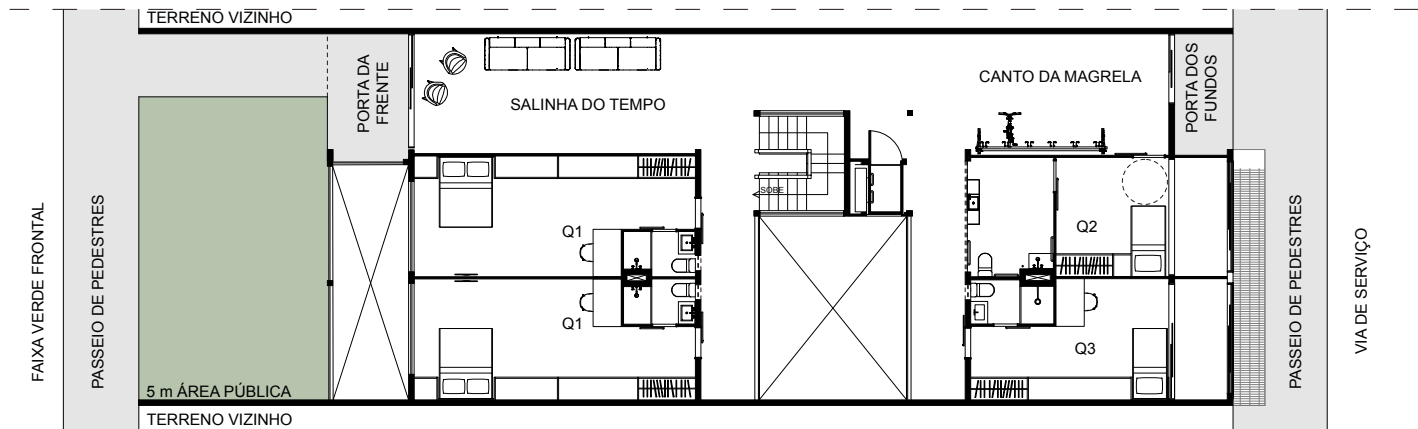
PLANTA TÉRREO DIA  
esc: 1:150



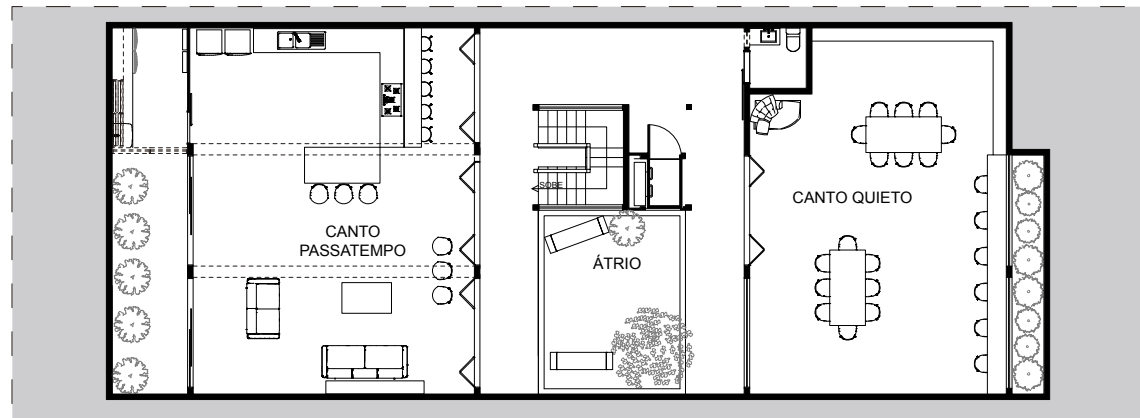
PLANTA SUBSOLO DIA  
esc: 1:150



PLANTA 1º PAV. NOITE  
esc: 1:150



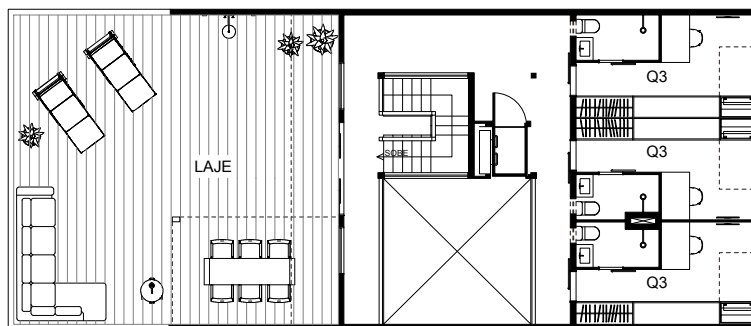
PLANTA TÉRREO NOITE  
esc: 1:150



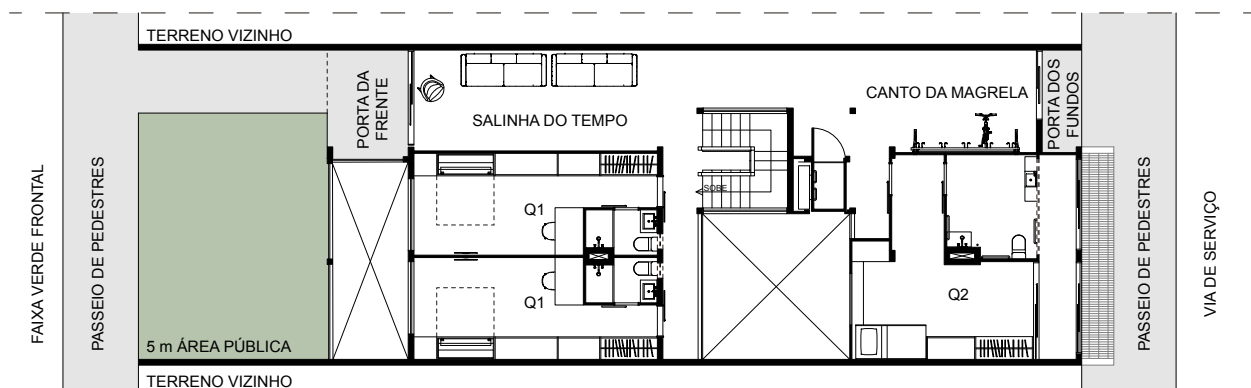
PLANTA SUBSOLO FESTA  
esc: 1:150



Aloja 711  
Planta Baixa  
8,5x20m



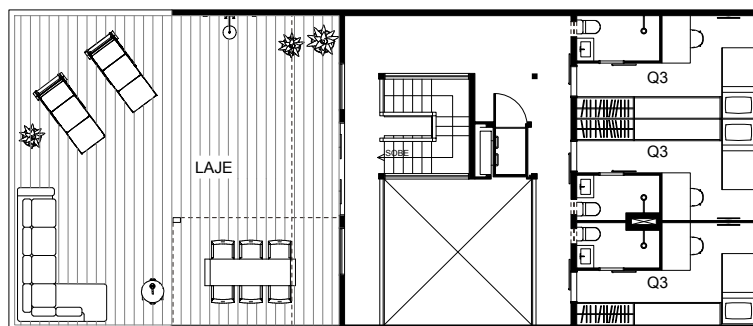
PLANTA 1º PAV. DIA  
esc: 1:150



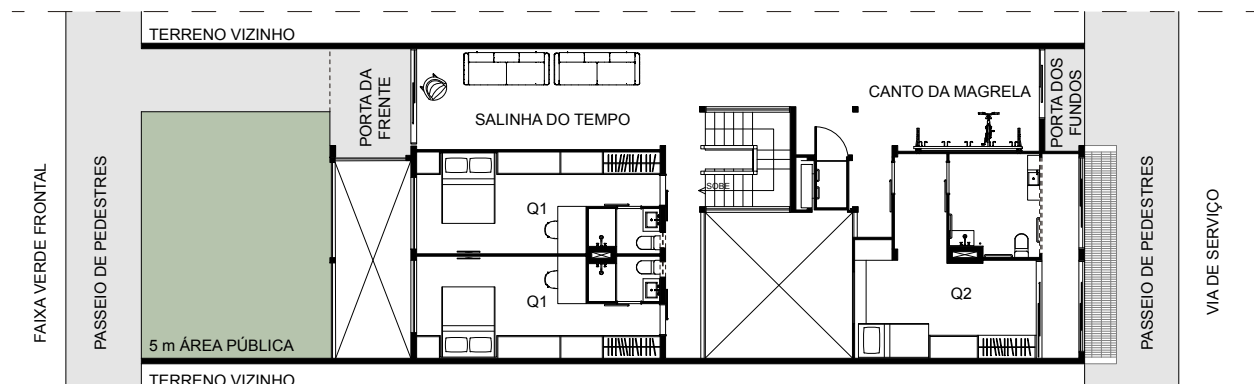
PLANTA TÉRREO DIA  
esc: 1:150



PLANTA SUBSOLO DIA  
esc: 1:150



PLANTA 1º PAV. NOITE  
esc: 1:150



PLANTA TÉRREO NOITE  
esc: 1:150



PLANTA SUBSOLO FESTA  
esc: 1:150



## BIBLIOGRAFIA

- BENEVOLO, Leonardo. *História da Arquitetura Moderna*. São Paulo: Perspectiva, 1976. 816 p.
- BRANDÃO, Vera. *Brasília, cidade patrimônio e sua escala residencial: preservar o quê e por quê?*. 2013. 450 f. Tese de Doutorado - Faculdade de Arquitetura e Urbanismo da UnB, Brasília. 2013.
- CHOAY, Françoise. *A Alegoria do Patrimônio*. São Paulo: Estação Liberdade: UNESP, 2006.
- CARPINTERO, Antônio C. Cabral. *Brasília: Prática e Teoria Urbanística no Brasil – 1956 – 1998*. 1998. 254 f. Tese de Doutorado - Faculdade de Arquitetura e Urbanismo da USP, São Paulo. 1998.
- CASTELO, Luis Felipe M. *Fissuras Urbanas*. 2008. 134 f. Dissertação de Mestrado – Faculdade de Arquitetura e Urbanismo da UnB, Brasília. 2008
- CHAGAS, Francisco. *Do risco à cidade: as plantas urbanísticas de Brasília, 1957-64*. 2003. 164 f. Dissertação de Mestrado - Faculdade de Arquitetura e Urbanismo da UnB, Brasília 2003.
- COSTA, Lúcio. *Brasília Revisitada 1985/1987*: Complementação, preservação, adensamento e expansão urbana. Revista Projeto, 1987. p 115 a 122.
- COSTA, Lucio. *Registro de uma Vivência*. São Paulo: Empresa das Artes, 1995. 608 p.
- COSTA, Lucio. *Brasília, cidade que inventei*. Brasília: IPHAN-DF, 2014. 140p.FICHER, Silvia; SCHLEE, Andrey. *Guia de obras de Oscar Niemeyer, Brasília 50 anos*. Brasília: Câmara dos Deputados, 2010. 263 p.
- GOVERNO DO DISTRITO FEDERAL. Secretaria do Desenvolvimento Urbano e Habitação. *Plano de Preservação do Conjunto Urbanístico de Brasília – PPCUB: Relatório Diagnóstico, Relatório Consolidado Volume 1*. 228 p.
- GROPIUS, Walter. *Bauhaus: novarquitectura*. Tradução J. Guinsburg e Ingrid Dormien. 5. ed. São Paulo: Perspectiva, 1997. 220 p.
- LE CORBUSIER. *Urbanismo*. São Paulo: Martins Fontes, 2000. 307 p.
- LE CORBUSIER. *Towards a New Architecture*. New York, Praeger, 1974.
- LEITÃO, Francisco; FICHER, Sylvia . *Do risco à cidade: as plantas urbanísticas de Brasília, 1957-64*. In: 8o Seminário de História da Cidade e do Urbanismo, Niterói, 2004. 18p.
- LIRA, Flaviana Barreto. *Por uma agenda de discussões sobre a conservação da arquitetura moderna*. In: 1º Seminário de Rede Conservação\_BR: A Conservação do Patrimônio no Brasil: teoria e prática. Olinda: Centro de Estudos da Conservação Integrada, 2015. 223 p.
- MACDONALD, Susan. *20th century Heritage: Recognition, Protection and Practical Challenges*. In ICOMOS World Report 2002-2003 on monuments and sites in danger. Paris: ICOMOS, 2003.

MEIRA, Ricardo Reis. *Frente ou Fundo: A inserção da casa unifamiliar na escala residencial do Plano Piloto de Brasília*. 2013. 180 f. Dissertação de Mestrado – Faculdade de Arquitetura e Urbanismo da UnB, Brasília. 2013.

RIEGL, Alois. *El culto moderno a los monumentos*. Madrid: Antônio Machado, 1987. 104 p.



